



# GMT MONTHLY MEMBERSHIP PROGRESS REPORT

Results as of: 5/31/2020

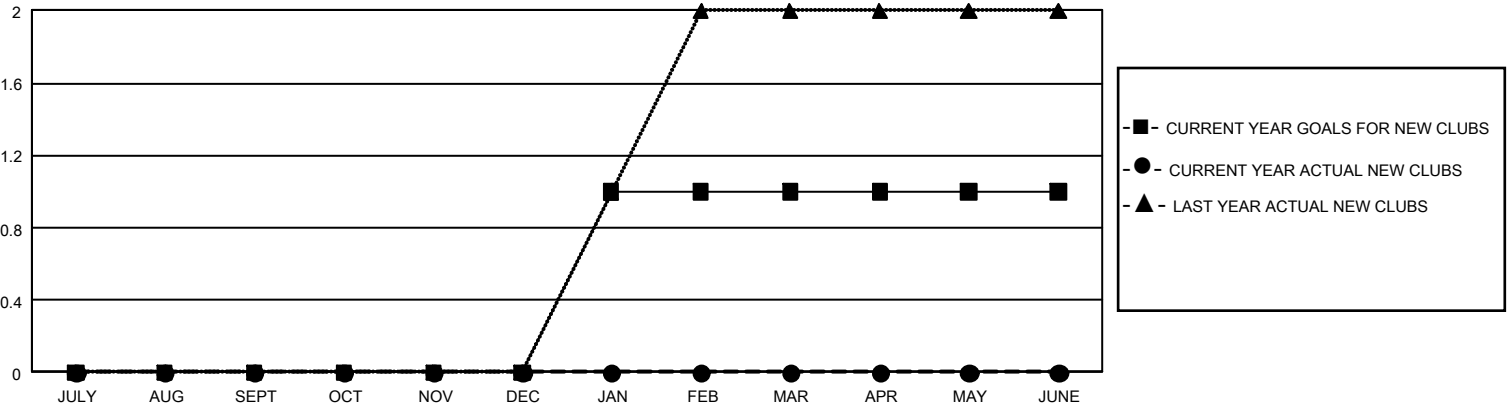
## GMT Constitutional Area 3, Group I

GMT: OPEN

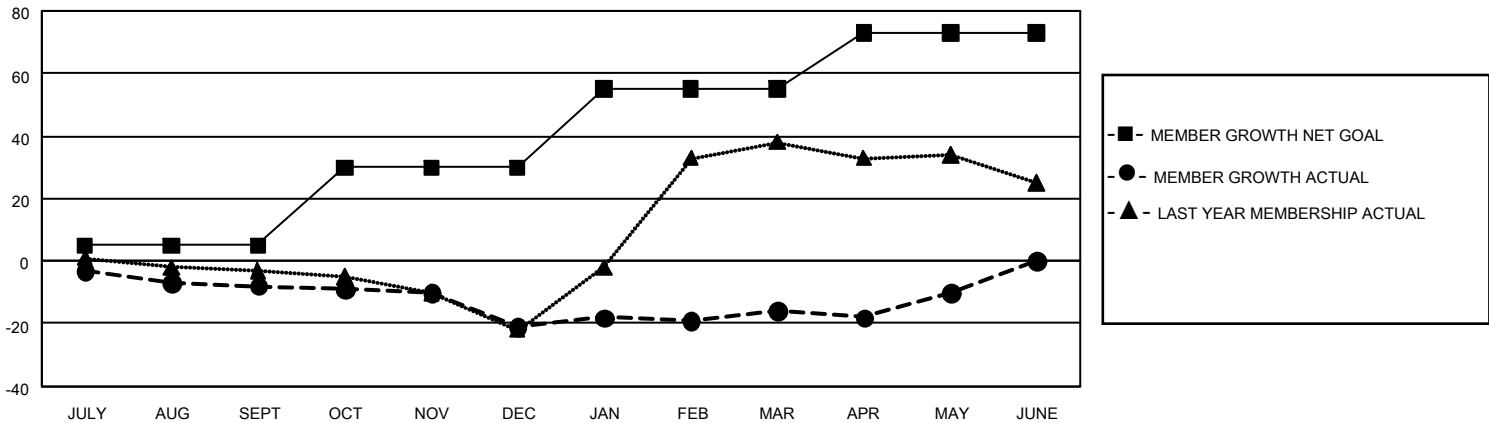
REPORT DOES NOT INCLUDE CLUBS IN UNDISTRICTED AREAS.

Clubs				Members			
RESULTS FOR 2019-2020				RESULTS FOR 2019-2020			
QUARTER	NEW CLUB GOAL	NEW CLUBS	DROPPED CLUBS	QUARTER	MEMBER GROWTH NET GOAL	MEMBER GROWTH ACTUAL	DROPPED MEMBERS ACTUAL (including transfers)
JULY/AUG/SEPT	0	0	0	JULY/AUG/SEPT	15	5	11
OCT/NOV/DEC	0	0	0	OCT/NOV/DEC	75	5	17
JAN/FEB/MAR	3	0	0	JAN/FEB/MAR	75	10	4
APR/MAY/JUNE	0	0	0	APR/MAY/JUNE	54	12	5

GOALS AND ACTUAL NEW CLUBS CUMULATIVE



GOALS AND ACTUAL MEMBERS CUMULATIVE



DROPPED CLUBS: 0	13 CLUBS OF 36 ADDED 1 OR MORE NEW MEMBERS	<b>GENDER DISTRIBUTION</b> MALE 304 (46.99%) FEMALE 343 (53.01%)
<b>DROPPED MEMBERS</b> DECEASED 7 CLUB CANCELLED 0 OTHER 30 TOTAL 37	<a href="#">CLICK HERE FOR CUMULATIVE MEMBERSHIP DATA</a>	TOTAL FAMILY UNIT MEMBERS 9 FAMILY MEMBERS PAYING HALF DUES 5